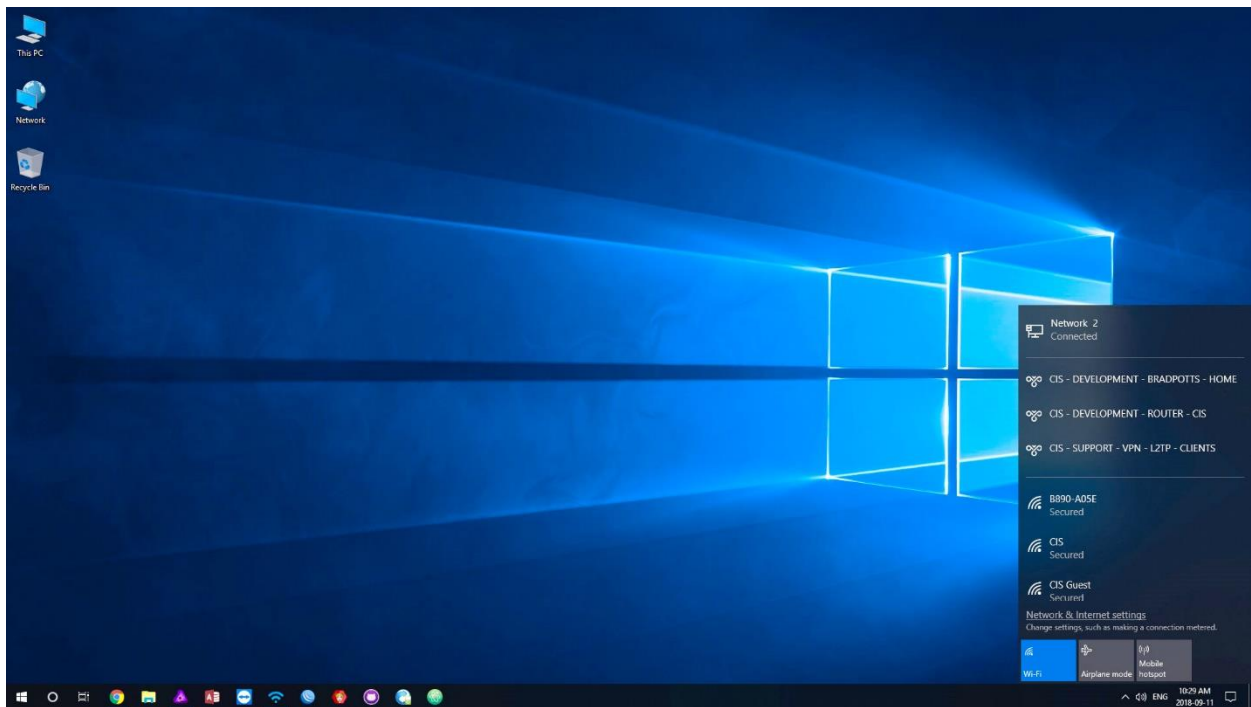
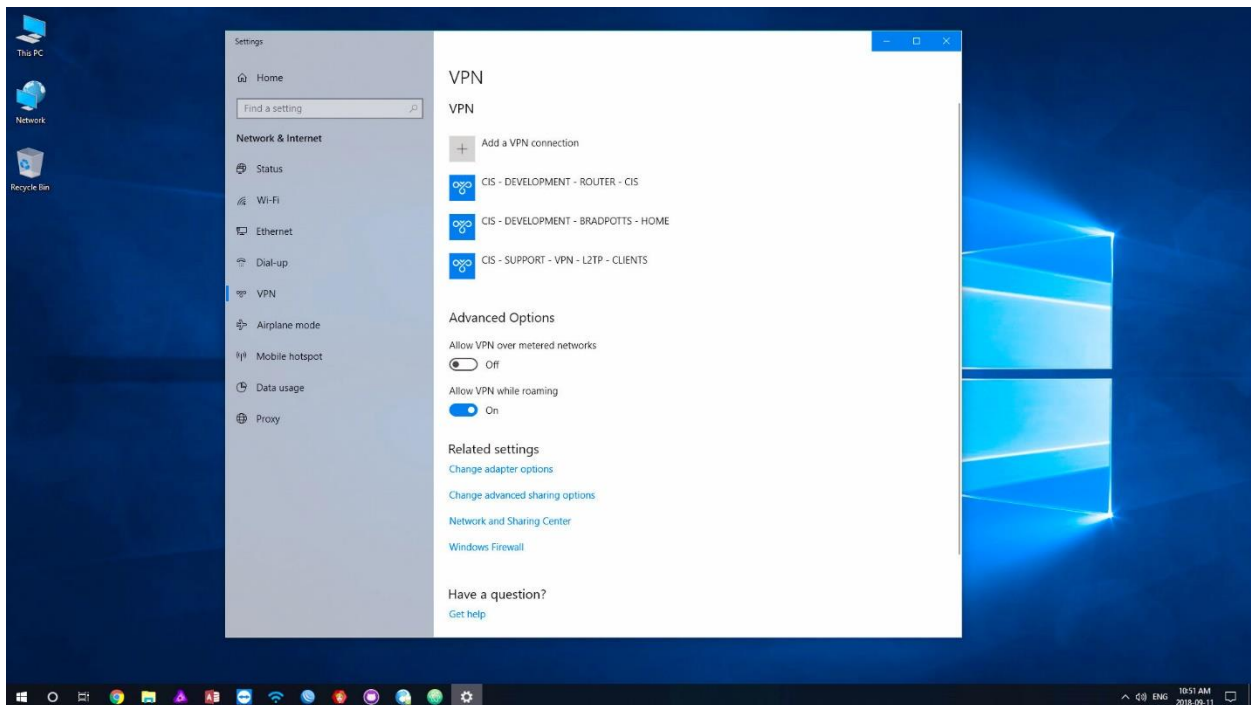


CIS Windows 10 VPN Setup Guide

STEP 1 – Find and Click Network Icon in Taskbar. Click “Network & Internet Settings”.

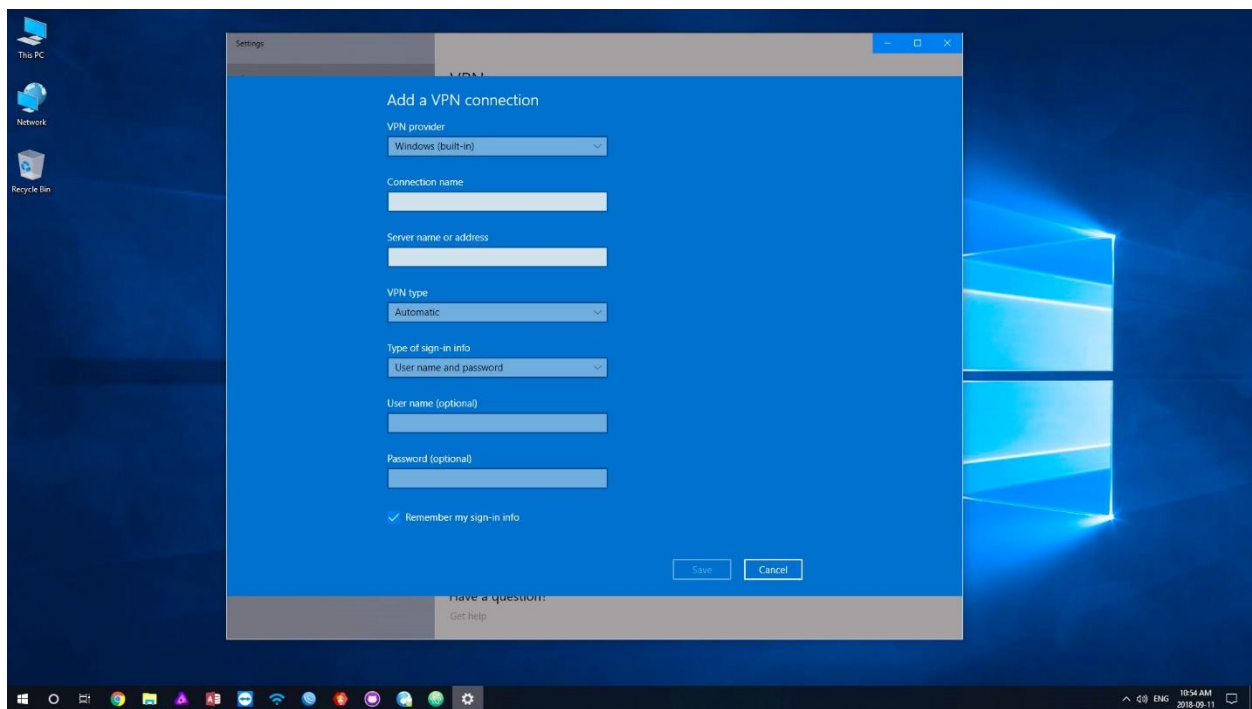


STEP 2 – Once settings Windows opens. Click “VPN” on left sidebar and click “Add a VPN Connection”.

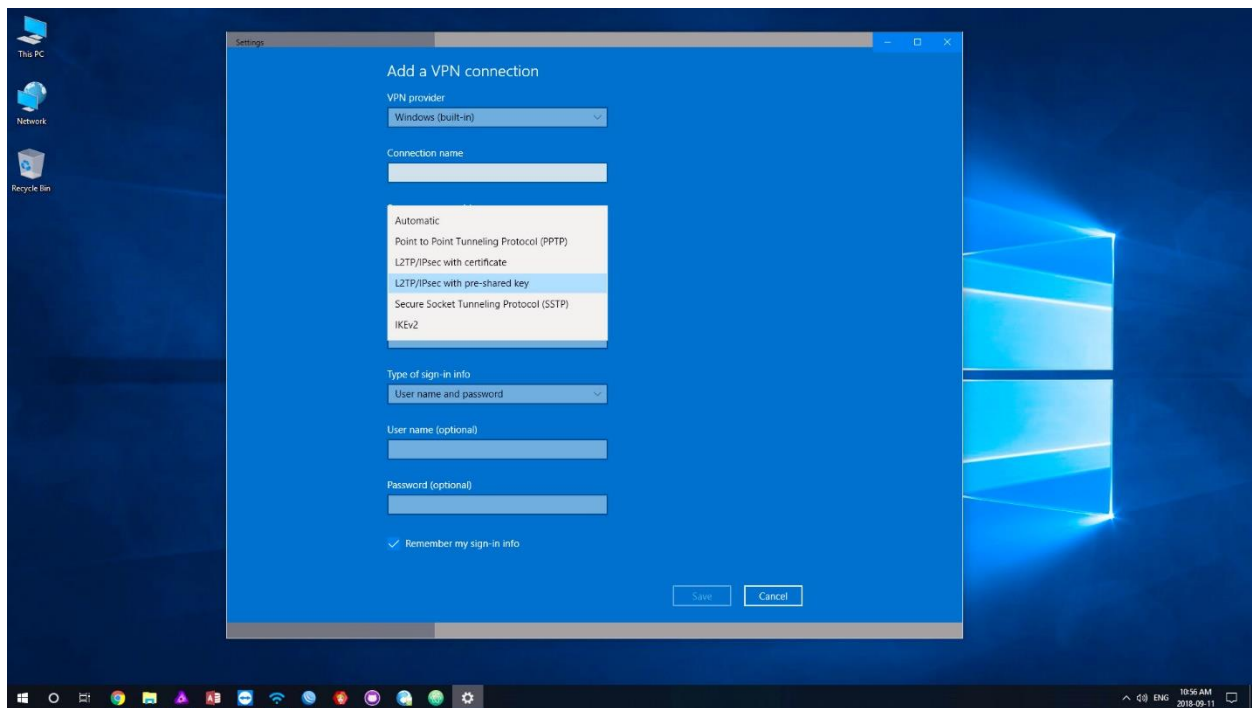


CIS Windows 10 VPN Setup Guide

STEP 3 – Add a VPN Connection Window Appears.

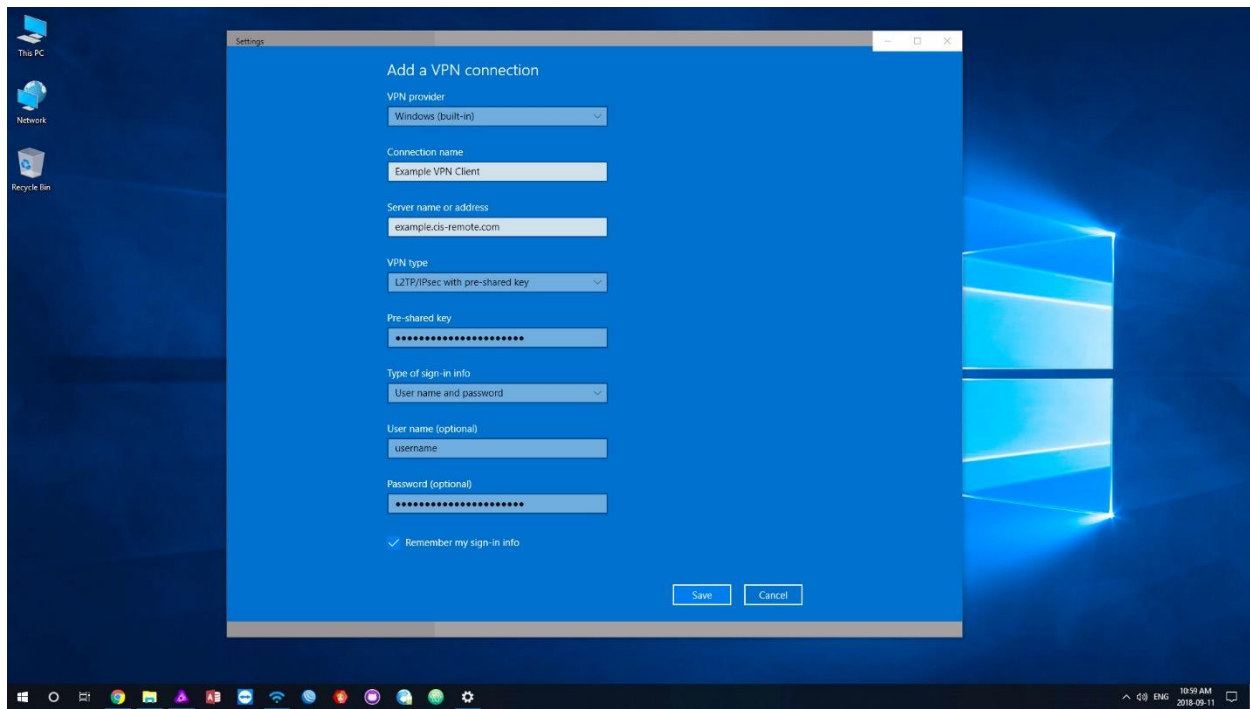


STEP 4 – Make Sure “VPN Type” is set to “L2TP/IPSEC with pre-shared key”.

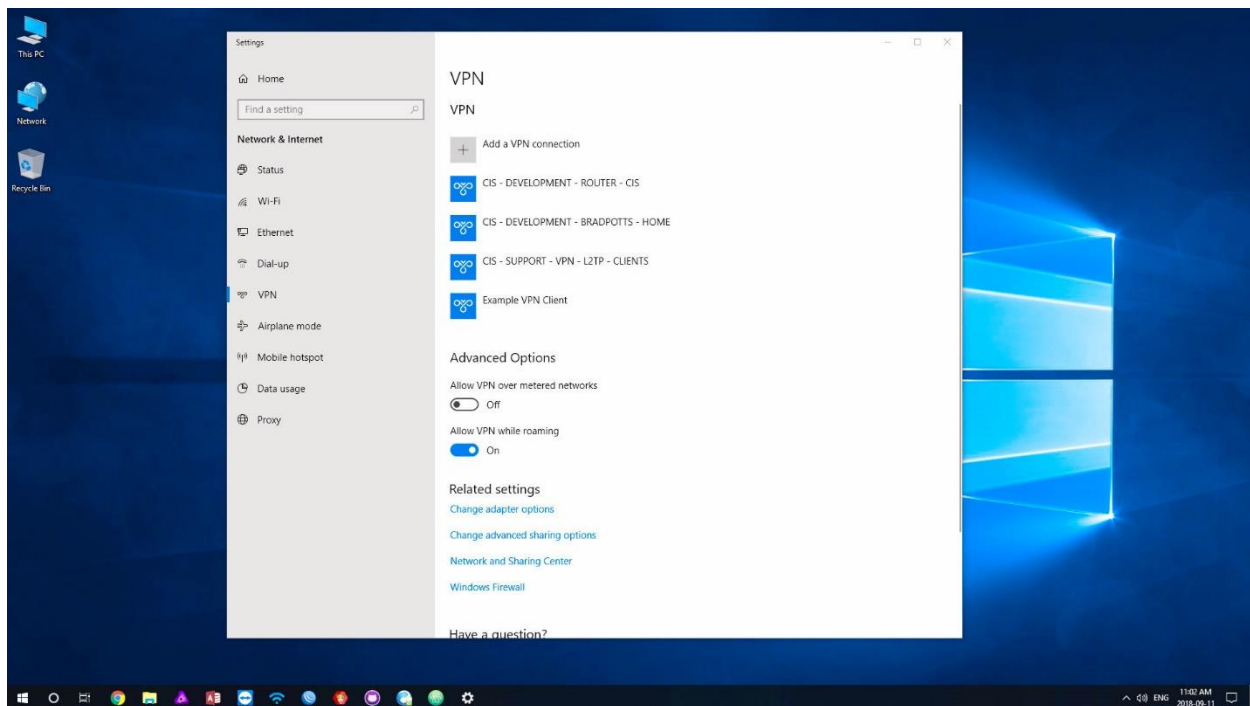


CIS Windows 10 VPN Setup Guide

STEP 5 – Fill out any name, then provided server address, pre-shared key, username and password.

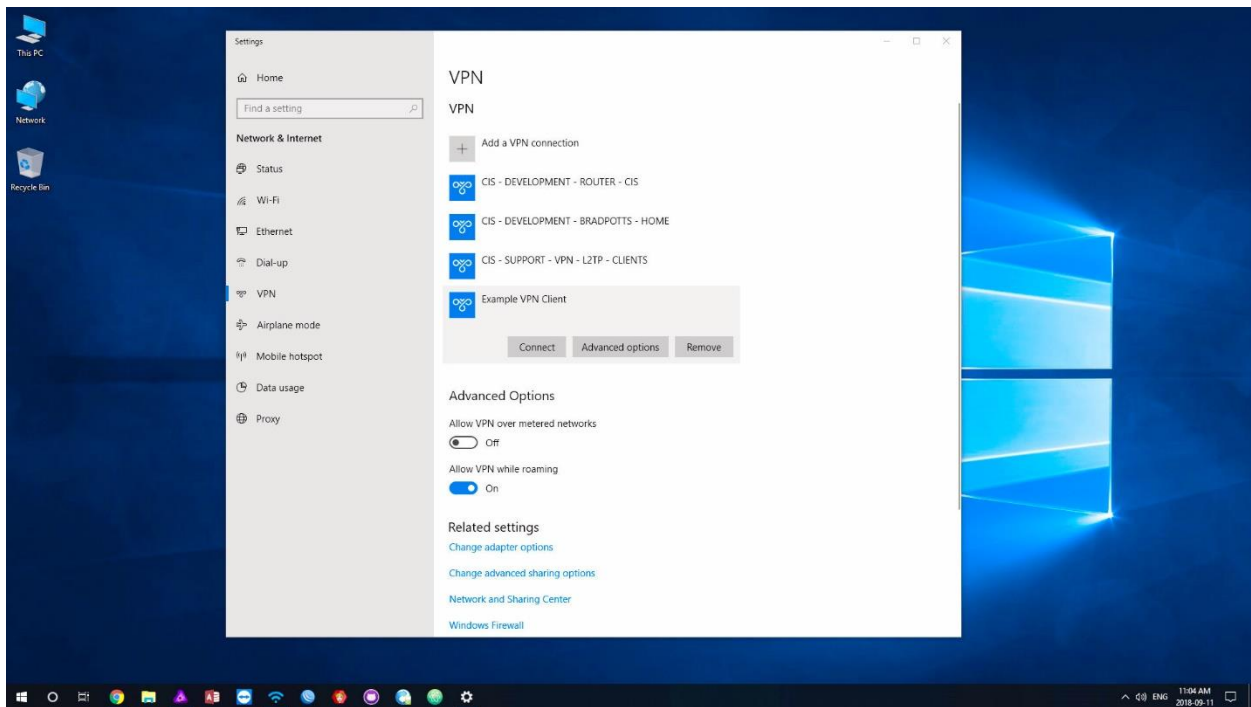


STEP 6 – After clicking save you'll be directed back to main VPN settings page with your new connection.

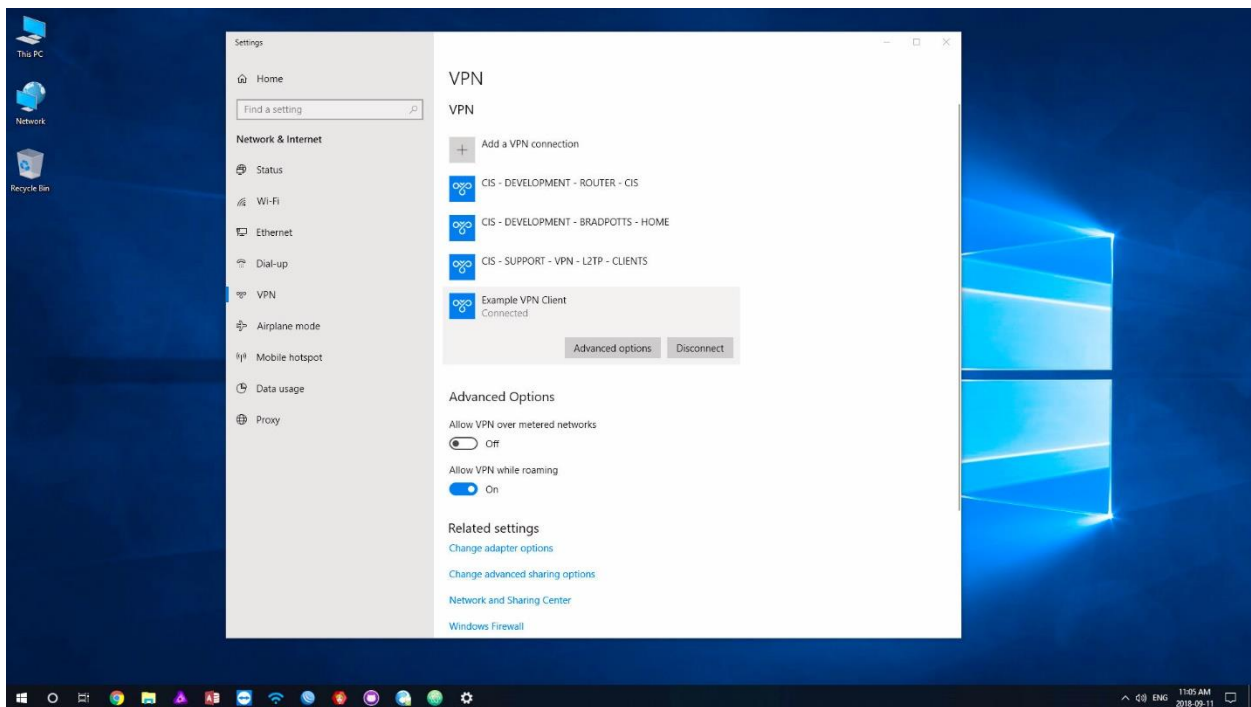


CIS Windows 10 VPN Setup Guide

STEP 7 – Click on new connection name and click “Connect” button.

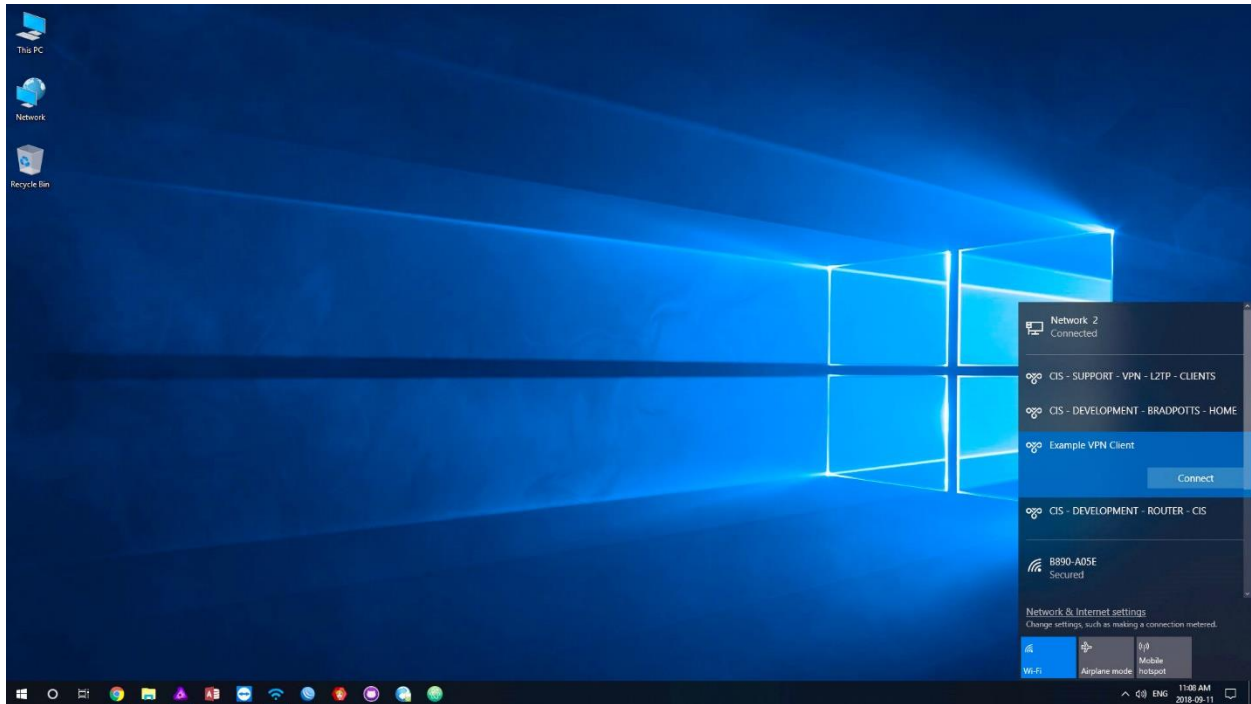


STEP 8 – If information alright connection will go through give a “Connected” status.



CIS Windows 10 VPN Setup Guide

STEP 9 – To reconnect click on network icon taskbar. Click “Connect” on desired VPN connection name.



STEP 10 – After should give status “Connected”, VPN can be disconnected by clicking “Disconnect”.

